

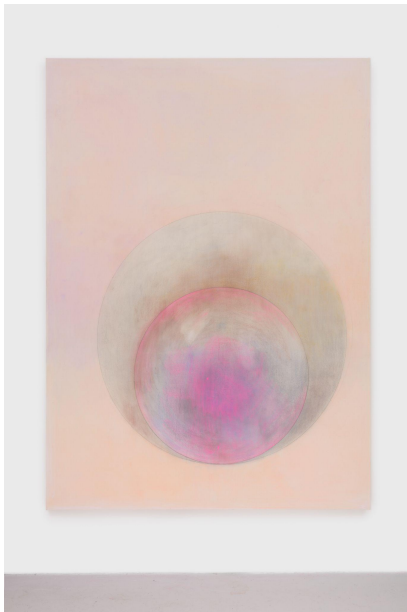
ALMA PEARL

Margarita Gluzberg: *Otherwhere*

3 November 2023 – 13 January 2024
Private view: Thursday, 2 November 2023, 6 - 8 PM

Unit T, Reliance Wharf
2-10 Hertford Rd
London N1 5ET

Wednesday–Saturday, 12-6pm



Margarita Gluzberg, *Peach 1960/80 Remix*, 2023 © Margarita Gluzberg

Alma Pearl is pleased to present *Otherwhere*, Margarita Gluzberg's first solo exhibition with the gallery. The work of Margarita Gluzberg often explores the tensions and reciprocal interplay between the past and the present, memory recall alongside recurring fiction, and the politics of desire. Gluzberg's practice ranges from drawing, photography, and performance to sound and film installation while drawing upon historical events and semi-biographical stories in its content, form, and presentation.

Featuring across the entirety of the gallery is a suite of works in pastels and coloured pencil on both canvas and paper that Gluzberg relates to as drawings. Here magical spheres float across the picture plane in archival colours and materials. These include highly pigmented American sets from the 1960s, subdued sticks from 1970s

Eastern Europe, and the artist's own childhood assortment. She conceives of this method of making as a kind of time-travel, which is significant: individual colour choices are made intuitively, but ultimately determined within the archival nature of what is available within her vintage sets saved and collected.

Also included is *Detail*, a work on paper from an earlier series. Taken from a Dior fashion shoot held in Moscow's Red Square in 1959, the source image from which the fragment is drawn was originally published in *Life* magazine. This drawing depicts the turn of a Soviet woman's ankle and shoe and the beautifully decorated hat of the Dior model. The work stands as an index for the forces of material, commodity and image culture, notions of migrations as well as Gluzberg's own history of dislocation.

In these novel visual configurations, Gluzberg's abstract and meditative body of works strives towards a conceptual zone which has been freed of any cultural associations. Their meaning is fully contained within the iridescent vintage materials deployed—bright and fluorescent blues, mesmerising hues of purples and greens, subdued browns—all markers of a remote place, an *otherwhere* that perhaps was and will never be again.

In earlier works from the same series these mystical and ethereal appearances floated lightly upon raw canvases. In the works Gluzberg presents here, the constellations are accompanied by a galaxy of foreign bodies and enchanted refractions. It is uncertain whether these manifestations are external influences or whether they originate from within the spheres. Freed from the confined and strict perimeters of the spheric geometrical form, these interlopers act as markers of the mutable chemistry of identity or the many articulations of desire.

Ultimately, the development of this series stems from the need to negotiate the world with its complexities and traumatic events in which personal grief overlaps with childhood memories of loss alongside historical events and conjunctures. The work becomes therefore an apparatus—or a conductor—linked to a desire which is perhaps difficult to articulate or to analytically pin down as it operates *both* as absence and lack, while also acting as a profoundly productive motor and motivating force.

About the Artist:

Born in Moscow in 1968, Margarita Gluzberg has lived in London since 1979. She studied at the Ruskin School of Art, University of Oxford, and the Royal College of Art in London. Solo exhibitions include *Proper Time*, Karsten Schubert, London (2022); *In Paradise*, Pushkin House, London (2019); *For Children Not For Children*, Filet Space, London (2018); *Avenue des Gobelins*, Paradise Row, London (2012). Her work was presented at major contemporary art spaces including the Musée d'Art Contemporain du Val-de-Marne, Paris; Contemporary Art Centre, Vilnius; Rooseum Center for Contemporary Art, Malmö; Kunsthal KAdE, Amersfoort; Lunds Konsthall, Lund; The British School at Rome (where she was a Wingate Scholar); Drawing Room, London; and Site Gallery, Sheffield. In 2016, her Wellcome Trust project 'Rock on Bones', a series of multimedia performance lectures, was staged at the De La Warr Pavilion, Bexhill; the London Performance Studios; and the Royal College of Art. Her work was featured in Artforum, Art Review, The Guardian and Frieze Magazine, amongst others.

About the Gallery:

Alma Pearl is a gallery devoted to exhibiting the work of artists established and emerging who, through the qualities of their work and practice, deserve greater exposure. At the core of its inception is an aim to reposition a gallery as a conduit for community building, both amongst artists and at a local and global level. Sustainability—for both our climate and planet as well as an artist's practice—is central to all aspects of Alma Pearl. Alma Pearl believes in the urgent power art possesses to make a difference, be a force for good, and enrich the lives of all those who make and experience its power, irrespective of race, gender and class. Alma Pearl is committed to fostering inclusive and equitable communities both in a physical and online space and believes that everybody should have equal access to creating and engaging with contemporary art.